



AVON | WEST  
STRAITFORD

# The Dusseldorf

Square Footage: 2,338

Bedrooms: 3

Bathrooms: 2.5

Storeys: 2

Lot Width: 44 ft.

3 Bedroom, 2 storey, double garage,  
2 1/2 baths, oversized ensuite and  
walk in closets, second floor study.



Division of Werner Bromberg Ltd.



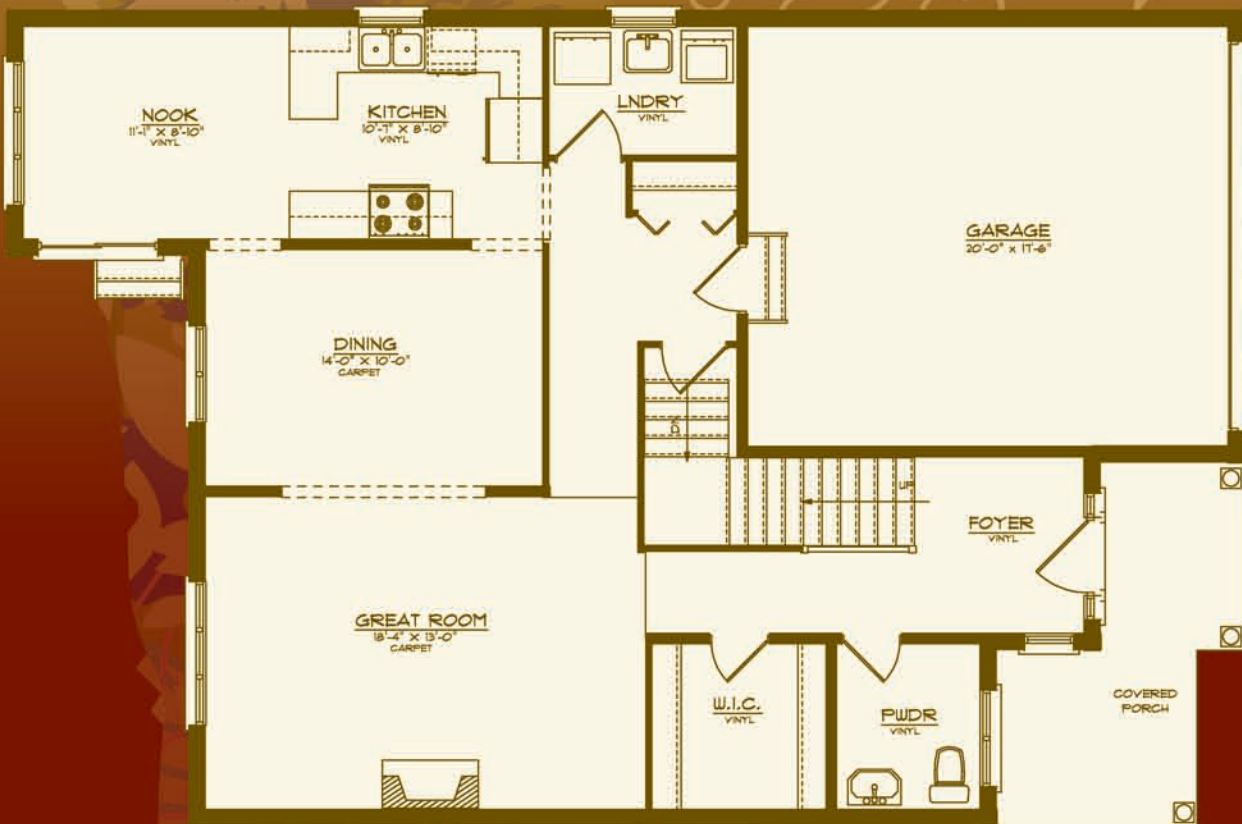
[www.bromberghomes.com](http://www.bromberghomes.com)



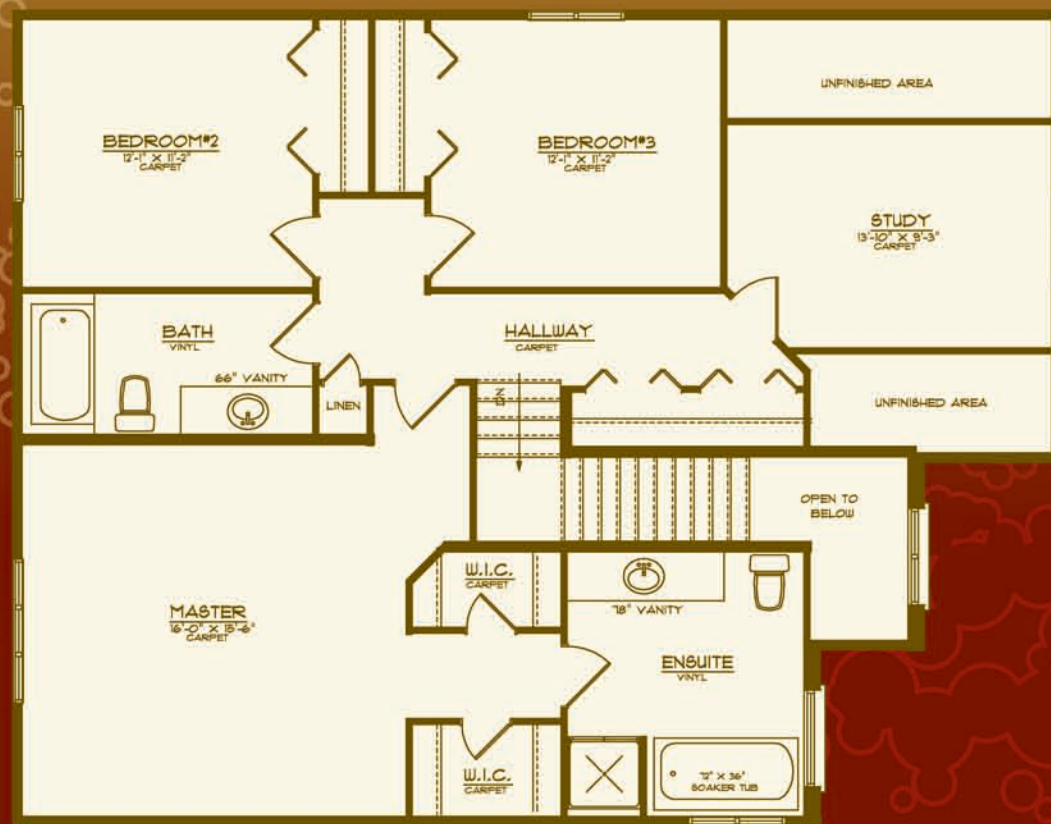
AVON | WEST  
STRAITFORD

# The Dusseldorf

2,338 sq. ft.



Main Floor  
1,072 Sq. Ft.



Upper Floor  
1,266 Sq. Ft.

All drawings are artist concepts of the final product and may be revised and/or improved as necessitated by Architectural controls. All floor plans are approximate dimensions. Floor areas shown include "open to below" but do not include garage or basement areas. E. & O. E.

